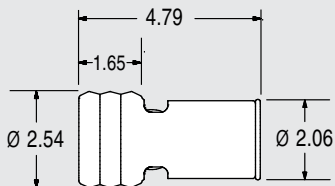


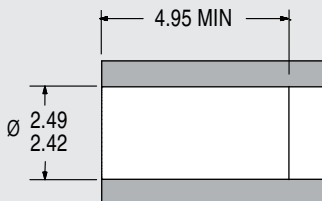
CHECK & RELIEF VALVES FOR PLASTIC

2.5mm RELIEF VALVE - CERAMIC BALL for PLASTIC INSTALLATION

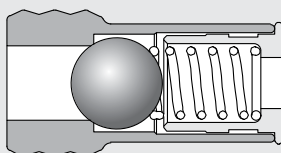
RELIEF VALVE



INSTALLATION HOLE



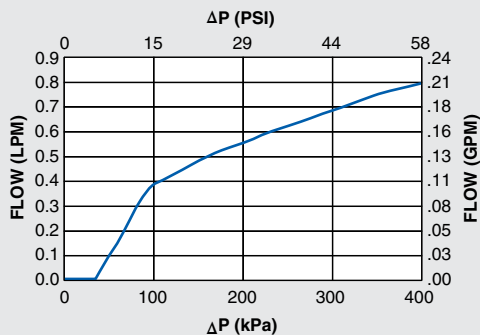
ACTUAL SIZE



Flow Direction →
Checked Direction ←

All dimensions in millimeters.

ΔP vs. Flow on Water @80°F (27°C)



Flow Curve for 40 kPa Valve

PERFORMANCE

Lohm Rate: 750 Lohms
 Leakage: 10 sccm/min. (max.) @500 kPa (72.5 psid) on air
 1 Drop/min. (max.) on water
 Cracking Pressure Tolerance: ± 15%

MATERIALS

Body..... 303 Stainless Steel
 Ball Stop ... 303 Stainless Steel
 Spring 302 Stainless Steel
 Ball..... Ceramic

INSTALLATION

Tool Part NumberCCRT0024277S
 To install, simply press the valve into a plastic installation hole until the valve is flush minimum with the top of the installation hole. The valve can be installed in either direction, providing forward or reverse flow capabilities.

LEE PART NO.	CRACKING PRESSURE
CCPI2580100S	100 kPa (14.5 psid)
CCPI2580150S	150 kPa (21.8 psid)
CCPI2580200S	200 kPa (29 psid)
CCPI2580250S	250 kPa (36.6 psid)
CCPI2580300S	300 kPa (43.5 psid)
CCPI2580345S	345 kPa (50 psid)

[View Installation Procedure](#)