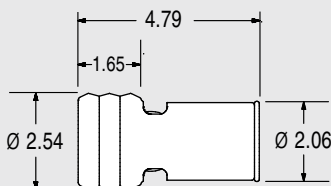




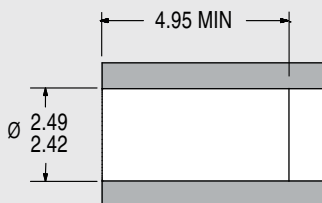
CHECK & RELIEF VALVES FOR PLASTIC

2.5mm CHECK VALVE for PLASTIC INSTALLATION

CHEK VALVE



INSTALLATION HOLE

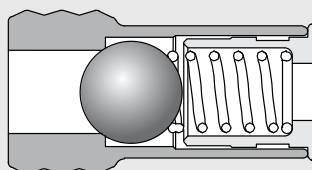


ACTUAL SIZE



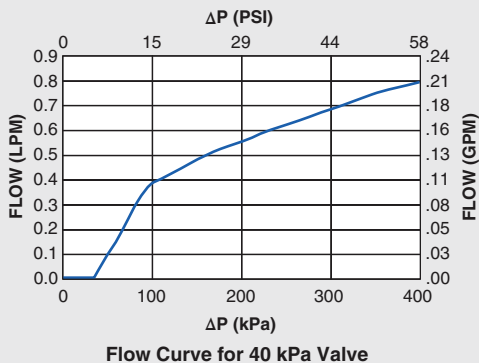
(As Installed)

All dimensions in millimeters.



Flow Direction →
Checked Direction ←

ΔP vs. Flow on Water @80°F (27°C)



PERFORMANCE

Lohm Rate: 750 Lohms

Leakage: 10 sccm/min. (max.) @500 kPa (72.5 psid) on air
1 Drop/min. (max.) on water

MATERIALS

Body..... 303 Stainless Steel
Ball Stop ... 303 Stainless Steel
Spring 302 Stainless Steel
Ball..... 440C Stainless Steel

INSTALLATION

Tool Part NumberCCRT0024277S

To install, simply press the valve into a plastic installation hole until the valve is flush minimum with the top of the installation hole. The valve can be installed in either direction, providing forward or reverse flow capabilities.

LEE PART NO.	CRACKING PRESSURE
CCPI2510000S	0 kPa (No Spring)
CCPI2510004S	4 ± 3 kPa (0.6 ± 0.4 psid)
CCPI2510007S	7 ± 5 kPa (1 ± 0.7 psid)
CCPI2510014S	14 ± 5 kPa (2 ± 0.7 psid)
CCPI2510040S	40 ± 15 kPa (6 ± 2.2 psid)