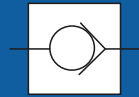
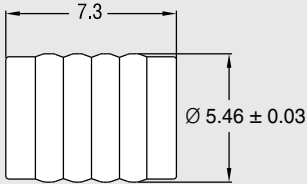


CHECK & RELIEF VALVES FOR PLASTIC



5.5mm CHECK VALVE - CERAMIC BALL for PLASTIC INSTALLATION

CHEK VALVE



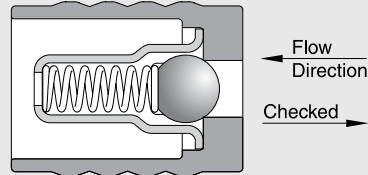
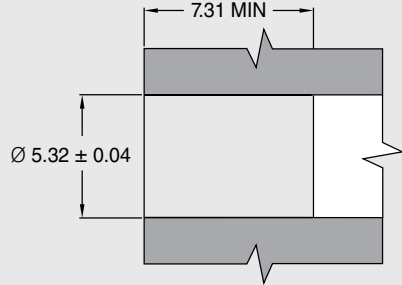
ACTUAL SIZE



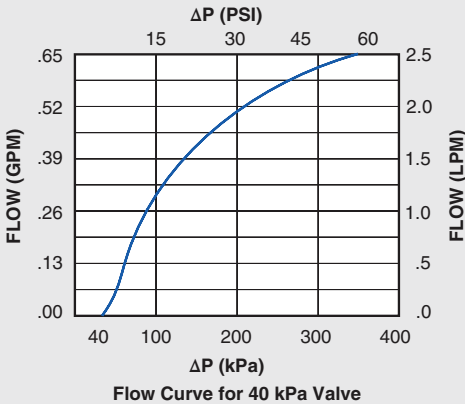
(As Installed)

All dimensions in millimeters.

INSTALLATION HOLE



ΔP vs. Flow on Water @80°F (27°C)



PERFORMANCE

Lohm Rate: 250 Lohms
 Leakage: 20 sccm/min. (max.) @172 kPa (25 psid) on air
 1 Drop/min. (max.) on water

MATERIALS

Body..... 303 Stainless Steel
 Cage 305 Stainless Steel
 Spring 302 Stainless Steel
 Ball..... Ceramic

INSTALLATION

Tool Part NumberCCRT0900170S

To install, simply press the valve into a plastic installation hole until the valve is flush minimum with the top of the installation hole. The valve can be installed in either direction, providing forward or reverse flow capabilities.

LEE PART NO.	CRACKING PRESSURE
CCPI5580000S	0 kPa (No Spring)
CCPI5580007S	7 ± 5 kPa (1 ± 0.7 psid)
CCPI5580014S	14 ± 5 kPa (2 ± 0.7 psid)
CCPI5580040S	40 ± 30 kPa (6 ± 4.4 psid)
CCPI5580069S	69 ± 17.3 kPa (10 ± 2.5 psid)