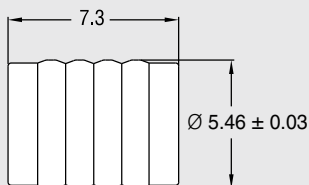




CHECK & RELIEF VALVES FOR PLASTIC

5.5mm CHECK VALVE for PLASTIC INSTALLATION

CHEK VALVE

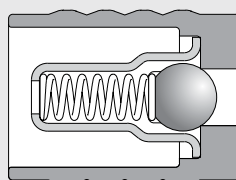
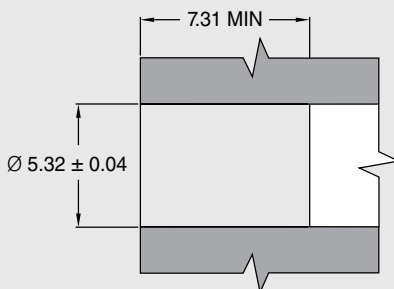


ACTUAL SIZE



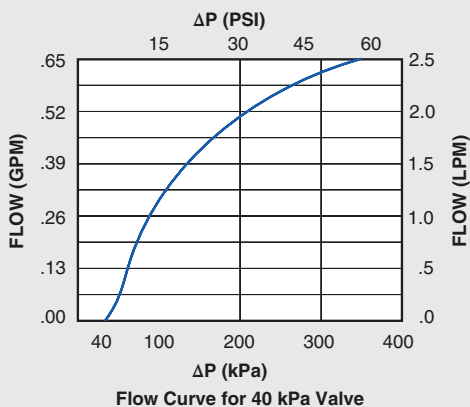
All dimensions in millimeters.

INSTALLATION HOLE



Flow Direction ←
Checked →

ΔP vs. Flow on Water @80°F (27°C)



Flow Curve for 40 kPa Valve

PERFORMANCE

Lohm Rate: 250 Lohms
 Leakage: 20 sccm/min. (max.) @ 172 kPa (25 psid) on air
 1 Drop/min. (max.) on water

MATERIALS

Body..... 303 Stainless Steel
 Cage 305 Stainless Steel
 Spring 302 Stainless Steel
 Ball..... 440C Stainless Steel

INSTALLATION

Tool Part NumberCCRT0900170S

To install, simply press the valve into a plastic installation hole until the valve is flush minimum with the top of the installation hole. The valve can be installed in either direction, providing forward or reverse flow capabilities.

LEE PART NO.	CRACKING PRESSURE
CCPI5510000S	0 kPa (No Spring)
CCPI5510004S	4 ± 3 kPa (0.6 ± 0.4 psid)
CCPI5510007S	7 ± 5 kPa (1 ± 0.7 psid)
CCPI5510014S	14 ± 5 kPa (2 ± 0.7 psid)
CCPI5510040S	40 ± 15 kPa (6 ± 2.2 psid)
CCPI5510069S	69 ± 17.3 kPa (10 ± 2.5 psid)