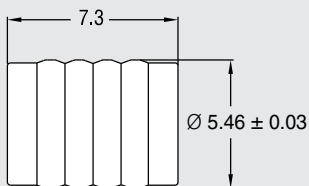




CHECK & RELIEF VALVES FOR PLASTIC

5.5mm CHECK VALVE - MEDICAL GRADE 316L for PLASTIC INSTALLATION

CHEK VALVE



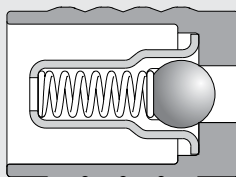
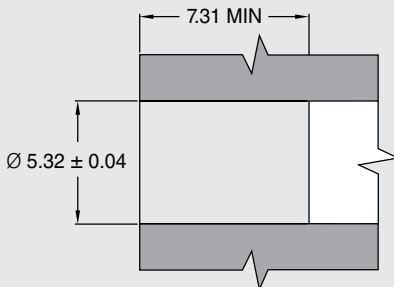
ACTUAL SIZE



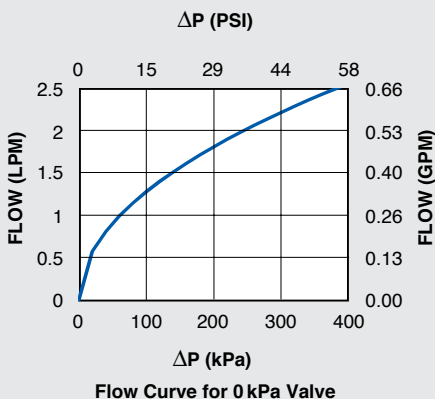
(As Installed)

All dimensions in millimeters.

INSTALLATION HOLE



ΔP vs. Flow on Water @80°F (27°C)



Flow Curve for 0 kPa Valve

PERFORMANCE

Lohm Rate: 250 Lohms

Leakage: 20 sccm/min. (max.) @ 172 kPa (25 psid) on air
1 Drop/min. (max.) on water

MATERIALS

Body..... 316L Stainless Steel
Cage 316L Stainless Steel
Spring 316L Stainless Steel
Ball..... Ceramic

INSTALLATION

Tool Part NumberCCRT0900170S

To install, simply press the valve into a plastic installation hole until the valve is flush minimum with the top of the installation hole. The valve can be installed in either direction, providing forward or reverse flow capabilities.

LEE PART NO.	CRACKING PRESSURE
CCPI5540000S	0 kPa (No Spring)
CCPI5540007S	7 ± 5 kPa (1 ± 0.7 psid)
CCPI5540014S	14 ± 5 kPa (2 ± 0.7 psid)
CCPI5540040S	40 ± 15 kPa (6 ± 2.2 psid)