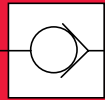
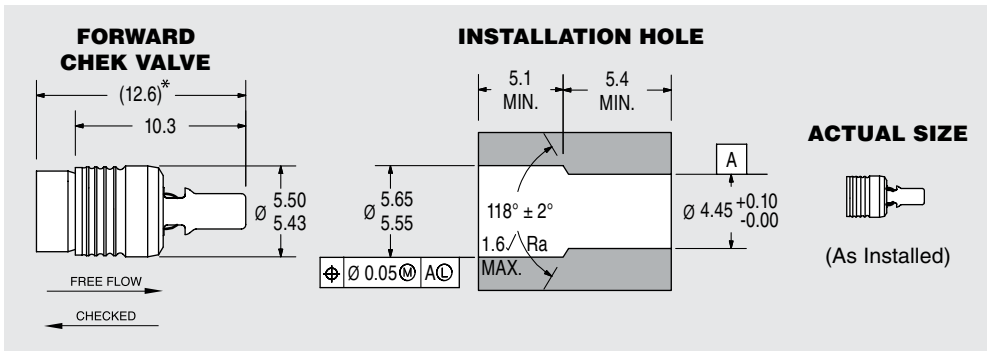


# INSERT CHECK VALVES

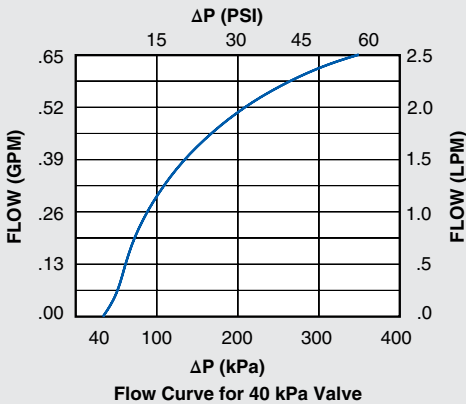


## 558 SERIES CHEK VALVE - CERAMIC BALL FORWARD FLOW



\* LOA before installation.  
All dimensions in millimeters.

### ΔP vs. Flow on Water @80°F (27°C)



### PERFORMANCE

Lohm Rate: 250 Lohms  
 Leakage: 20 sccm/min. (max.) @ 172 kPa (25 psid) on air  
 1 Drop/min. (max.) on hydraulic fluid  
 Maximum Working Pressure:  
 28 MPa (4,060 psid) (Checked Direction)  
 4 MPa (580 psid) (Flow Direction)

### MATERIALS

Body ..... 303 Stainless Steel  
 Cage ..... 305 Stainless Steel  
 Pin ..... 416 Stainless Steel  
 Spring ..... 302 Stainless Steel  
 Ball ..... Ceramic

### INSTALLATION

Tool Part Number ..... CCRT0900120S  
 Force ..... 625 Kg F (max.)

[View Installation Procedure](#)

LEE PART NO.	CRACKING PRESSURE
CCFM2550800S	0 kPa (No Spring)
CCFM2550814S	14 ± 5 kPa (2 ± 0.7 psid)
CCFM2550840S	40 ± 30 kPa (6 ± 4.4 psid)