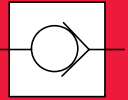
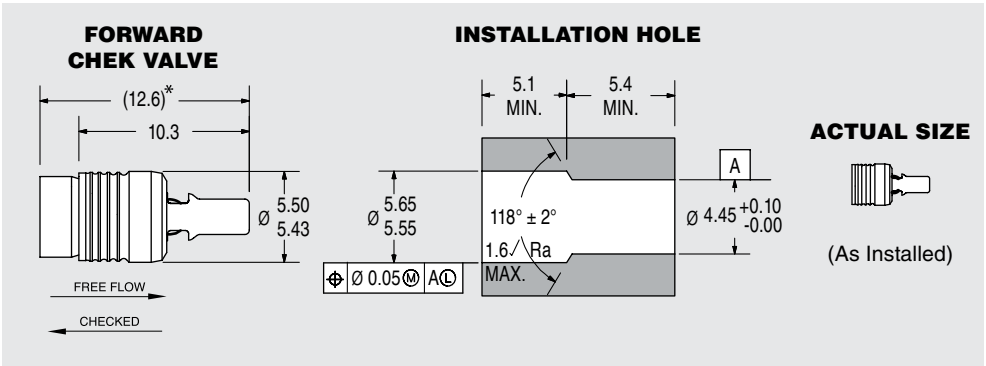


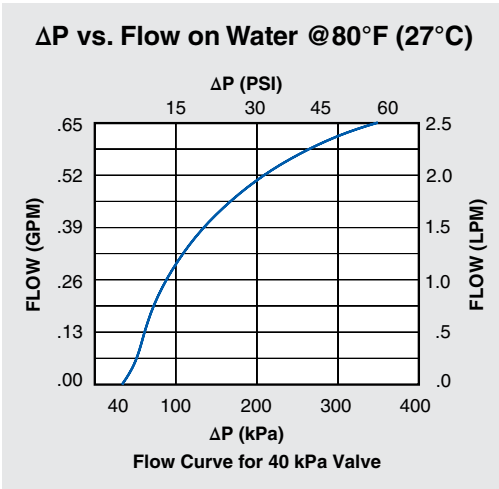
INSERT CHECK VALVES



558 SERIES CHEK VALVE - FORWARD FLOW



* LOA before installation.
All dimensions in millimeters.



PERFORMANCE	
Lohm Rate:	250 Lohms
Leakage:	20 sccm/min. (max.) @ 172 kPa (25 psid) on air 1 Drop/min. (max.) on hydraulic fluid
Maximum Working Pressure:	28 MPa (4,060 psid) (Checked Direction) 4 MPa (580 psid) (Flow Direction)

MATERIALS	
Body	303 Stainless Steel
Cage	305 Stainless Steel
Pin	416 Stainless Steel
Spring	302 Stainless Steel
Ball	440C Stainless Steel

LEE PART NO.	CRACKING PRESSURE
CCFM2550200S	0 kPa (No Spring)
CCFM2550204S	4 ± 3 kPa (0.6 ± 0.4 psid)
CCFM2550207S	7 ± 5 kPa (1 ± 0.7 psid)
CCFM2550214S	14 ± 5 kPa (2 ± 0.7 psid)
CCFM2550225S	25 ± 10 kPa (3.6 ± 1.5 psid)
CCFM2550240S	40 ± 30 kPa (6 ± 4.4 psid)
CCFM2550269S	69 ± 17 kPa (10 ± 2.5 psid)

INSTALLATION	
Tool Part Number	CCRT0900120S
Force	625 Kg F (max.)
View Installation Procedure	