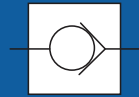
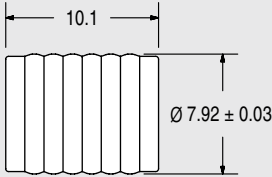


CHECK & RELIEF VALVES FOR PLASTIC

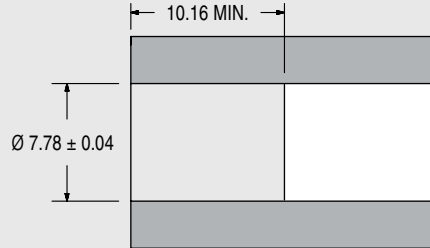


8.0mm CHECK VALVE - CERAMIC BALL for PLASTIC INSTALLATION

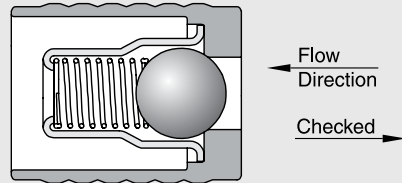
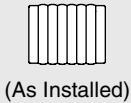
CHEK VALVE



INSTALLATION HOLE

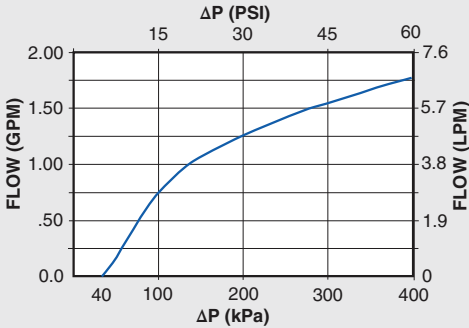


ACTUAL SIZE



All dimensions in millimeters.

ΔP vs. Flow on Water @80°F (27°C)



Flow Curve for 40 kPa Valve

PERFORMANCE

Lohm Rate: 75 Lohms
 Leakage: 20 sccm/min. (max.) @172 kPa (25 psid) on air
 1 Drop/min. (max.) on water

MATERIALS

Body..... 303 Stainless Steel
 Cage 305 Stainless Steel
 Spring 302 Stainless Steel
 Ball..... Ceramic

INSTALLATION

Tool Part NumberCCRT0900180S

To install, simply press the valve into a plastic installation hole until the valve is flush minimum with the top of the installation hole. The valve can be installed in either direction, providing forward or reverse flow capabilities.

LEE PART NO.	CRACKING PRESSURE
CCPI8080000S	0 kPa (No Spring)
CCPI8080007S	7 ± 5 kPa (1 ± 0.7 psid)
CCPI8080014S	14 ± 5 kPa (2 ± 0.7 psid)
CCPI8080040S	40 ± 30 kPa (6 ± 4.4 psid)
CCPI8080069S	69 ± 17.3 kPa (10 ± 2.5 psid)