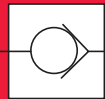
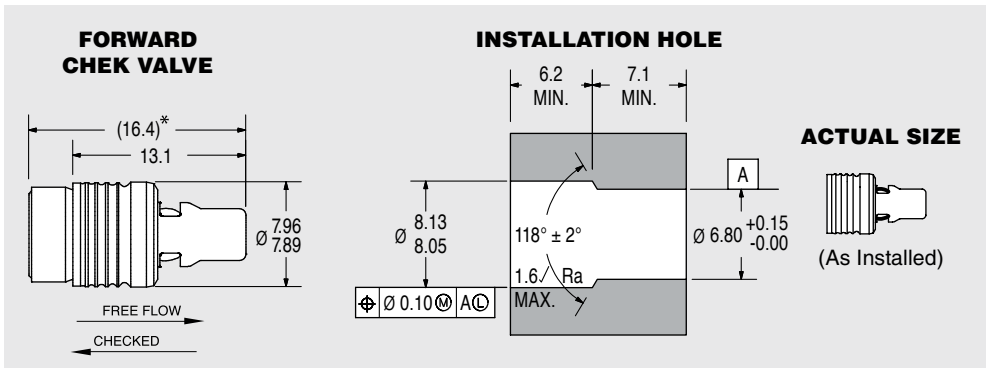


INSERT CHECK VALVES

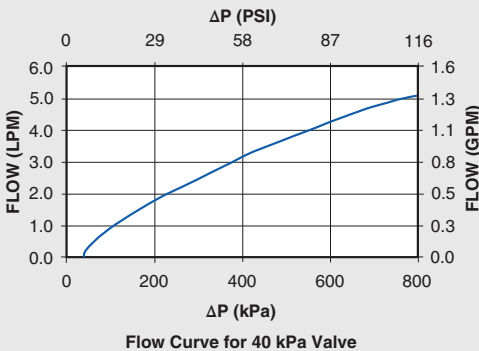


855 SERIES CHEK VALVE - SCREENED FORWARD FLOW



* LOA before installation.
All dimensions in millimeters.

ΔP vs. Flow on Water @80°F (27°C)



Flow Curve for 40 kPa Valve

PERFORMANCE

Lohm Rate: 170 Lohms
 Leakage: 20 sccm/min. (max.) @ 172 kPa (25 psid) on air
 1 Drop/min. (max.) on hydraulic fluid (MIL-PRF-83282)
 Screen Size: 125 Micron Absolute
 Maximum Working Pressure:
 28 MPa (4,060 psid) (Checked Direction)
 4 MPa (580 psid) (Flow Direction)

MATERIALS

Body 303 Stainless Steel
 Cage 305 Stainless Steel
 Pin 303 Stainless Steel
 Spring 302 Stainless Steel
 Ball 440C Stainless Steel
 Screen 316 Stainless Steel

INSTALLATION

Tool Part Number CCRT0900150S
 Force 680 Kg F (max.)

[View Installation Procedure](#)

LEE PART NO.	CRACKING PRESSURE
CCFM2803000S	0 kPa (No Spring)
CCFM2803014S	14 ± 5 kPa (2 ± 0.7 psid)
CCFM2803040S	40 ± 30 kPa (6 ± 4.4 psid)
CCFM2803069S	69 ± 30 kPa (10 ± 4.4 psid)