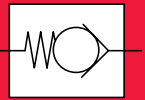
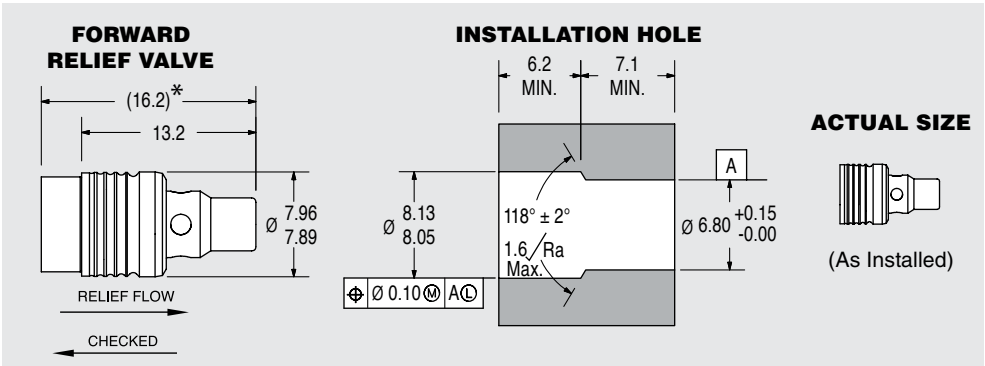


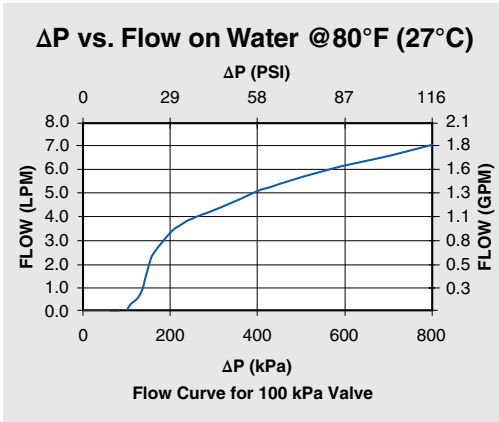
INSERT RELIEF VALVES



855 SERIES RELIEF VALVE - FORWARD FLOW



All dimensions are in millimeters.
* LOA before installation



PERFORMANCE	
Lohm Rate:	120 Lohms
Leakage:	20sccm/min. (max.) @ 172 kPa (25 psid) on air 1 Drop/min. (max.) on hydraulic fluid
Maximum Working Pressure:	28 MPa (4,060 psid) Checked Direction 4 MPa (580 psid) Flow Direction
Cracking Pressure Tolerance:	±15%

MATERIALS	
Body	303 Stainless Steel
Cage	416 Stainless Steel
Pin	416 Stainless Steel
Spring	302/17-7* Stainless Steel
Ball	440C Stainless Steel

LEE PART NO.	CRACKING PRESSURE
PCFM3800210S	100 kPa (14.5 psid)
PCFM3800215S	150 kPa (21.8 psid)
PCFM3800220S	200 kPa (29 psid)
PCFM3800225S	250 kPa (36.6 psid)
PCFM3800230S	300 kPa (43.5 psid)
PCFM3800235S	350 kPa (50.8 psid)
PCFM3800240S	400 kPa (58 psid)
PCFM3800250S	500 kPa (72.5 psid)
PCFM3800255S*	550 kPa (79.8 psid)

INSTALLATION	
Tool Part Number CCRT0900150S
Force 680 Kg F (max.)
View Installation Procedure	